



THESE MEN AND WOMEN ARE COMMITTED TO SHAPING THE FUTURE OF RURAL, REMOTE, AND REGIONAL AUSTRALIA



AUSTRALIAN RURAL LEADERSHIP PROGRAM DIRECTORY COURSE 18 ♦ 2011-12

THIS IS A DIRECTORY OF THE PARTICIPANTS IN THE EIGHTEENTH INTAKE OF THE AUSTRALIAN RURAL LEADERSHIP PROGRAM

The ARLP is a unique opportunity for selected rural and regional leaders to undertake a program of personal growth and develop the skills, knowledge and networks needed to be effective in regional, state, national and international arenas.

The program focuses on professional and personal leadership development, examination of key national and international issues that impact on rural Australia, and interaction with leaders in government, industry and the community.



INVESTORS IN RURAL AUSTRALIA THROUGH COURSE 18:

1st Floor 24 Napier Close Deakin ACT 2600
 PO Box 298 Deakin West ACT 2600
 T. 02 6281 0680
 F. 02 6285 4676
 info@rural-leaders.com.au
 www.rural-leaders.com.au
 ABN 80 056 874 787



AUSTRALIAN RURAL LEADERSHIP PROGRAM DIRECTORY COURSE 18 ♦ 2011-12



ALICE BEILBY

Katherine, NT

Department of Agriculture, Fisheries and Forestry

Alice is Managing Director of Savanna Solutions Pty Ltd, a company specialising in natural resource management and regional development. Her cross-cultural background and passion for community development in regional and remote areas, has led to her work with indigenous peoples' organisations and industry groups to develop business enterprises. Alice is an Associate Fellow of the Australian Institute of Management (AIFM), and a member of the NT Indigenous Business Network.



CHRISTOPHER CLIFFE

Freshwater (Cairns), QLD
Department of Health and Ageing

Christopher is a Registered Nurse specialising in rural and remote health. He is Manager (Primary Health Care) for the Royal Flying Doctor Service in QLD and President of CRANaplus, the national body for remote and isolated health professionals in Australia. Christopher has worked in complex health environments in remote Australia and in war and disaster zones across the world. He is Co-Founder and Co-Director of Extreme Health Consultants and holds a Master of Public Health.



ROHAN CORPUS

Chermside, QLD

SANTOS

As a proud Aboriginal Australian, Rohan has lived most of his life working with the injustices that face marginalised and disadvantaged communities here in Australia and overseas. His aim is to enhance community capital and build capacity. Employed by Queensland Health, Rohan helps Aboriginal and Torres Strait Islanders and others residing in rural and remote QLD access tertiary-level specialist cardiac services.



MICHAEL CROFT

Uriarra, NSW

Vincent Fairfax Family Foundation Ltd

A first generation farmer, Michael operates a vertically integrated, value adding, field to fork operation, bridging the city-country divide. Passionate about biological farming, diversity and resilient food systems, he walks the talk of triple bottom line, promoting eating as an agricultural and ecological act. Michael is a director of several industry organisations, a leader in the Slow Food movement, national spokesperson for the Australian Food Sovereignty Alliance, and an author.



ANDREW DAVIS

Lennox Head, NSW

Westpac

Andrew is Westpac's Commercial and Agribusiness Regional Manager for the North Coast of NSW. Having previously worked in Canberra, Sydney and Melbourne, he moved to northern NSW six years ago to enable his children to be educated in regional NSW. Andrew spent several years working for a timber company in the Riverina prior to completing tertiary qualifications and joining Westpac. Andrew has also been actively involved in junior sport coaching.



RICHARD EVISON

Samson, WA

Australian Pork Ltd

Richard is Production Manager at Westpork Pty Ltd in WA. He has worked in both indoor and outdoor production in the UK, Canada and Australia. Richard is passionate about pig production and providing employment and training opportunities in rural WA. He sits on the Executive of the West Australian Pork Producers Association; the Pig Biosecurity Group for WA and holds a Diploma in Agriculture.



MELISSA FLETCHER

Redland Bay, QLD

Fletcher International Exports

Melissa is Director of a family business, Fletcher International Exports Pty Ltd (FIE). The company operates two sheep processing facilities, one in Dubbo NSW and one in Albany WA. Melissa commissioned the WA processing facility and was General Manager of the facility for ten years. She is of Kamilaroi descent and is passionate about indigenous issues. Melissa holds a Diploma in Meat Management.



ADRIENNE FRANCIS

O'Connor, ACT

Rural Industries Research and Development Corporation

Adrienne is a Canberra based multimedia news journalist with the Australian Broadcasting Corporation (ABC). Adrienne has worked across northern Australia for seven years and has presented the Northern Territory Country Hour as well as ABC TV and Radio News. She contributes to Radio Current Affairs, 7.30, Landline, Lateline Business and ABC News 24. Adrienne holds a Bachelor of Science (Agriculture).



LAUREN GANLEY

Somerton Park, SA

Telstra Country Wide

As General Manager of Telstra's National Indigenous Directorate, Lauren is leading business activities that provide positive outcomes for indigenous communities across Australia. Lauren is a member of the NT Indigenous Economic Development Taskforce, Business Council of Australia-Business Indigenous Network, and in December 2010 was appointed by the Prime Minister as a member of an expert panel on Constitutional Recognition of Aboriginal and Torres Strait Islander Peoples.



GEORGE GIAKOUIMIS

Magill, SA

Department of Agriculture, Fisheries and Forestry

George manages an orchard, is CEO of a successful housing association for homeless youth and is Managing Director of a landscape and civil construction company. He serves on numerous committees focussing on horticulture, housing and welfare. He is also a Board member of the Roxby Downs Community Board, Foundation, Club and Radio. George holds a Bachelor of Education, Diploma in Teaching and Advanced Diplomas of Business, HR, Horticulture and Community Services.

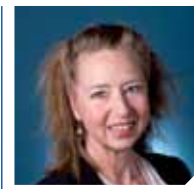


BRETT HALL

Oatlands, TAS

Meat and Livestock Australia

Brett is a cattle and sheep farmer at "Montlea", Oatlands, Tasmania. He is passionate about farmers having an influence on the future direction of their industry and the opportunity to provide practical input into issues that affect rural people and their communities. Brett's industry positions include: Trustee of the Tasmanian Beef Trust; Chairman of the Tasmanian Farmers and Graziers Meat Council; and Chairman of the Southern Australian Meat Research Council.



FERN HAMES

Alexandra, VIC

Department of Sustainability and Environment - VIC

As Victorian Co-ordinator of the Murray-Darling Basin Authority's Native Fish Strategy, Fern works in the Victorian Department of Sustainability and Environment's Research Branch, the Arthur Rylah Institute. Her role involves research, stakeholder engagement and knowledge brokering. Fern has extensive experience in environmental education, freshwater fish research and 'citizen science' and is also an active volunteer with the Jane Goodall Institute Australia. Fern holds a Bachelor of Science (Hons).



TESS HERBERT

Eugowra, NSW

Australian Lot Feeders Association

Tess is a partner in three grain-fed cattle enterprises in NSW. She is an elected Councillor with the Australian Lot Feeders Association and chairs the Feedlot Management Committee. With an interest in quality assurance and community awareness of cattle feedlotting, Tess has spent the last ten years in operational and strategic management of the three feedlot businesses. She holds a Bachelor of Arts, a Graduate Diploma in Education and a Master of Letters (Literature).



SAM HOLMES

Tanunda, SA

Grape and Wine Research and Development Corporation

Sam is the CEO of Barossa Grape and Wine Association, the peak body representing over 170 wineries and 740 grape growers of the Barossa Wine Region. Sam's family background includes running a white Suffolk sheep stud, grape growing and winemaking. His career has focused on the sales and marketing of Australian Wine around the world after graduating from Roseworthy Agriculture College.



DAVID JOCHINKE

Murra Warra, VIC

Grains Research and Development Corporation

David is a third generation primary producer who operates broadacre cropping and sheep production enterprises at Murra Warra, north of Horsham, VIC. He has previously been involved in safflower research and was awarded an Australian Nuffield Scholarship investigating 'How Farmers Influence their Industry'. David recently held the position of Treasurer at the Victorian Farmers Federation and is currently the site steward for the Wimmera Machinery Field Days.



KIM MCDUGALL

Lathlain, WA

Australian Meat Processor Corporation

As Executive Manager, Livestock, of the Harvey Industries Group, Kim is responsible for procurement of livestock for Harvey Beef, WA's largest beef processor. Kim is responsible for strategic planning, business development and managing key relationships in the supply chain. Recently appointed to the role of Board member of the Western Australian Meat Industry Authority, Kim holds an Advanced Diploma in Leadership and Management.



ALISON MCINTOSH

Crookwell, NSW

Rural Press Ltd

Alison runs an agricultural consulting business, AJM Livestock Solutions, offering services and advice to beef cattle producers in her area. She also runs a herd of stud Angus cattle in conjunction with the family seedstock operation "Myanga Angus". Alison is a Councillor of the Royal Agricultural Society of NSW, she is a Cattle Council of Australia 'Beef Cattle Rising Champion' Ambassador and is the 2010 RIRDC Rural Women's Award NSW runner up.



SAMARA MILLER

Port Lincoln, SA

Fisheries Research and Development Corporation

Samara is the Executive Officer of the Abalone Industry Association of SA and has 16 years of experience working with the seafood industry. She is a member of a national people development advisory group for the seafood industry and is on the Eyre Peninsula Natural Resource Management Board as a community member. Samara holds a Master of Science in Marine Environmental Protection.



JOHN MOSBY

Yorke Island, QLD

Torres Strait Regional Authority

John is an indigenous Torres Strait Islander from the Central/Eastern Cluster Island of Masig. He is Director/Chairperson of Kailag Enterprise Limited (KEL). KEL is an indigenous not-for-profit trustee organisation for the people of Masig. Its primary objective is to manage an aquaculture venture producing bath sponges at an approved marine farm. John holds an Associate Degree in Indigenous Community Management and Development.



MARK NIKOLAI

South Arm, TAS

Fisheries Research and Development Corporation

Mark is the Chief Executive Officer, Tasmanian Association for Recreational Fishing (TARFish), which is the peak body addressing the interests of recreational fishers. Mark sits on the Tasmanian Fisheries Research Advisory Board and the Recfish Australia Board and is actively involved in state and national fishing industries. Mark holds a Master of Business Administration.



CHANTAL OXENHAM

Townsville, QLD

Centrelink

Chantal is Region Manager with the Department of Human Services in the Northern Queensland Service Zone, including Cape York and the Torres Strait. Her position is at the forefront of the Commonwealth Government Service Delivery Reform, implementing new strategies to deliver services to rural and remote QLD. Chantal has a keen interest in and involvement in women's issues. Chantal holds a Bachelor of Arts.



TOM RAYNER

Prospect, SA

Elders

The Rohan Macauley Memorial Scholarship

Tom is currently Zone Sales Performance Manager for Elders Ltd based in Adelaide, SA. His role sees him working with all salespeople across the Elders' product range in SA, Alice Springs and Broken Hill.

Originally from a family property at Hallett in the mid-north of SA, Tom has been working for Elders for five years and holds a Bachelor of Commerce.



TAMMIE REID

Bunbury, WA

Vincent Fairfax Family Foundation Ltd

Trained as a forester, Tammie has worked in natural resource management across numerous southwest regional communities in WA. Currently a member of a state based Incident Management Team responding predominantly to bushfire, she is a life member of WA Water Polo, past school council Chair and National Parks and Nature Conservation Authority member, a Laughter Yoga facilitator and an active International Association for Public Participation practitioner. Tammie holds a Master of Science degree.



ANDREW RICE

Parkes, NSW

Grains Research and Development Corporation

An Agribusiness Consultant with the WHK Group, Andrew's primary role is the provision of integrated technical and business management support to farm businesses. As a member of consulting teams, he has also completed business and natural resource management projects.

Andrew is an active partner in a mixed farming business. He is a member of various grains industry groups and local Landcare. Andrew holds a Bachelor of Rural Science (1st class Hons).



MICHAEL SUTHERLAND

Dubbo, NSW

Alkane Resources Ltd

As General Manager NSW for Alkane Resources Ltd, Michael works on mineral development projects in the NSW Central West. Though initially trained as a geologist, he has spent 17 years as a broadacre sheep/wheat farmer. Michael has had a long involvement with natural resource management and is passionate about the role mining can play in sustainable community development. Michael holds a Bachelor of Science degree and a Graduate Certificate in Community Relations (Resources Sector).



VIVIEN THOMSON

Muttama, NSW

Department of Agriculture, Fisheries and Forestry

Vivien helps run the family farm at Muttama, NSW. She has been involved in fire fighting for over 24 years and achieved the highest honour of an Australia Fire Service Medal. She runs an executive coaching business, was a Board member for Australian Women in Agriculture and was appointed to the Southern Ranges Advisory Committee. Vivien holds qualifications in agriculture, horticulture and emergency management.



MICHAEL UNDERWOOD

Katherine, NT

Tim Fairfax Family Foundation

Michael is a third generation pastoralist from the Victoria River District of the NT. He has been actively involved in the NT Cattlemen's Association and has more than 20 years of experience in developing and running cattle stations.

Michael is a member of the Katherine Pastoral Industry Advisory Committee and the North Australian Beef Research Committee. Michael holds a Diploma in Beef Cattle Husbandry and a private fixed wing and helicopter licence.



BRADLEY WARREN

Merewether, NSW

Woolworths Limited

Brad is currently Executive Chair of OceanWatch Australia, an environmental non-government organisation working with the seafood industry on environmental issues including fish habit, water quality and sustainability. Brad worked for 20 years as a commercial fisher, and has represented industry in many varied fora. He is a graduate of the 2002 National Seafood Industry Leadership Program, and a graduate member of the Australian Institute of Company Directors.



DAVID WATSON

Navigators, VIC

Department of Sustainability and Environment - VIC

David is Senior Project Officer with Victoria's Department of Sustainability and Environment. Growing up on a vineyard inspired a career in hospitality before moving into natural resource management and climate change adaptation. David was the inaugural Chair of the Regional Sustainability Alliance Ballarat and is the Chair of the climate action group BREAZE. David has a keen interest in systems and futures thinking and holds a Bachelor of Science in Environmental Management.



TORRES WEBB

Torres Strait, QLD

Torres Strait Regional Authority

Torres is the National Indigenous Australian Government Youth Representative for National Youth Week 2011. He is an upcoming leader for the Torres Strait. Employed by the Department of Immigration and Citizenship, he has worked within the Australian Public Service for eight years. He is passionate about 'closing the gap' on indigenous issues. He is currently working on a sustainable organic farming project. Torres holds a Bachelor of Applied Science.



BE PART OF THE NEXT PROGRAM
- DOWNLOAD AN APPLICATION TODAY AT

www.rural-leaders.com.au